

SHELLFISH REGULATIONS

SPORT AND PERSONAL USE

SOUTHEAST ALASKA

License Requirements: A valid Alaska sport fishing license is required to take shellfish under personal use and sport regulations. Alaska residents 60 years or older with an ADF&G permanent ID card, residents under 18, and nonresidents under 16 years of age are exempt from these license requirements. **Alaska residents can** harvest shellfish under sport, personal use, or subsistence regulations and **nonresidents** must harvest shellfish under sport regulations. *Please note that this summary does not include subsistence regulations.*

Seasons: Fishing for shellfish is open year-round except:

- **Tanner crab:**
 - **June 16-June 30: Closed to sport and personal use fishing for Tanner crab, except in the Yakutat area (Cape Suckling to Cape Fairweather)** where there is no closed season for Alaska residents under personal use regulations.
- **King crab:**
 - Open to **RESIDENTS ONLY** under personal use regulations. **Check for emergency orders and/or permits with the nearest ADF&G office.**
- **Shrimp:**
 - **March 1-April 30: Closed to sport and personal use fishing for shrimp.**

Combining Limits: Harvest, bag, possession, and pot limits for shellfish may not be added to those allowed for other fisheries (i.e. anglers may not combine gear or harvests from multiple fisheries to exceed applicable limits).

Disfiguring of Crab: Until a crab has been processed or prepared for human consumption, no one may mutilate or otherwise disfigure it in any manner that prevents determination of whether it meets the minimum size limit.

Disturbing Other Angler's Pots: Anglers may not disturb, tamper with, or pull another angler's pots without prior permission of the pots' owner.

Fishing From a Commercial Vessel: When fishing for personal use or sport shellfish from a commercially licensed vessel, special provisions may apply. This can include a prohibition from fishing for personal use or sport shellfish fisheries immediately before, during, or immediately after a commercial shellfish fishery. Please contact the local ADF&G Division of Commercial Fisheries for more information.

Furnishing Shellfish to Clients or Guests: An owner, operator, or employee of a lodge, charter vessel, or similar business that provides food, lodging, or sport fishing guide services may not provide clients or guests with subsistence, sport, or personal use-caught shellfish, unless the shellfish:

1. Was caught by the client or guest using gear they deployed and retrieved;
2. Was taken with gear marked with the client's or guest's name and address; and
3. Is for the personal consumption by the client or guest, or consumed in their presence.

Legal Crab: Only male crab may be retained. Male crab less than the minimum size limit and all female crab may not be possessed and must be returned unharmed to the water immediately. See page 45.

Live Holding Facilities: Live holding facilities used to pool multiple bag limits of crab by one or more persons are not allowed.

Operators and Crew of a Charter Vessel: A captain and crew of a charter vessel may not deploy, set, or retrieve their own gear in a shellfish fishery when that vessel is being chartered.

Permit for King Crab: Resident anglers are required to obtain a free permit to harvest king crab. Permits are available online at <https://store.adfg.alaska.gov> or at ADF&G offices. Three separate permits available: Juneau 11-A summer, Juneau 11-A winter, and Southeast Region. Reporting is required, whether you went crabbing or not. See page 42.

Permit for Shrimp: Anglers are required to obtain a free permit to harvest shrimp. Permits are available online at <https://store.adfg.alaska.gov> or at ADF&G offices. Reporting is required, whether you went shrimping or not. See page 42.

- Residents should obtain the Personal Use/ Subsistence Shrimp permit.
- Nonresidents should obtain the Sport Shrimp permit.

Possession Limit: For all shellfish species in Southeast Alaska, the possession limit equals one daily bag limit.

Sale of Shellfish: It is unlawful to buy, sell, trade, or barter shellfish, their parts, or eggs caught under personal use or sport fishing regulations.

ALLOWABLE GEAR

Abalone may be taken by abalone irons, diving gear (except SCUBA and hookah gear, which are prohibited), or by hand.

Clams may be taken by rakes, shovels, hand, or manually operated clam guns. Geoducks may also be taken by residents using a hydraulic clam digger.

Crab may be taken by pots, ring nets, diving gear, hand, dip nets, and hooked or hookless hand lines.

Other Shellfish may be taken by hook and line in addition to all other gear listed above. Alaska residents may use trawls, hand jigging, and hand-operated dredges under personal use regulations.

Scallops may be taken by diving gear, dip nets, or by hand. Residents may use abalone irons under personal use regulations.

Shrimp may be taken by pots, ring nets, and trawls (trawls may be operated only by Alaska residents under personal use regulations and require a permit).

Squid may be taken with the use of not more than two squid jigs attached to a single line. See page 55 for definition of squid jig. Standard sport fishing gear described on page 7 may also be used.

SHELLFISH REGULATIONS

POT REQUIREMENTS SOUTHEAST ALASKA

ESCAPE RINGS: Each pot used to take Dungeness, Tanner, or king crab must have a minimum of two escape rings on opposite sides of the pot. Escape rings on Dungeness crab pots must be on the upper half of the vertical plane of the pot.

- **Dungeness crab escape rings:** 4³/₈ inches minimum inside diameter.
- **Tanner crab escape rings:** 4³/₄ inches minimum inside diameter.
- **King crab escape rings:** 6¹/₄ inches minimum inside diameter.

ESCAPE MECHANISM: A biodegradable escape mechanism is required for crab and shrimp pots. Required escape mechanisms vary by pot construction and are divided into two categories: non-rigid mesh pots and rigid mesh pots.

BUOY MARKINGS: Shellfish pot and ring buoys must be marked with: 1) Angler's first initial and last name; 2) Home address; and 3) the Division of Motor Vehicles registration number (AK number) of the vessel used to operate the pot or the vessel name. Adding your phone number is recommended.

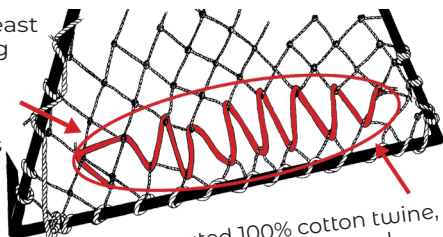
SHRIMP POT SIZE REQUIREMENTS: Any pot used to take shrimp may not have more than 4 tunnel eye openings, may not have a bottom perimeter greater than 153 inches, and may not exceed a volume of 25 cubic feet. No tunnel eye opening may exceed 15 inches in perimeter.

NON-RIGID MESH POTS

Pot sidewalls, which may include the tunnel sidewalls, must contain an opening that is laced, sewn, or secured together by a single length of untreated, 100% cotton twine, no larger than 30-thread. The cotton twine may be knotted at each end only. The opening must be within 6 inches of the bottom of the pot and must be parallel with it. The cotton twine may not be tied or looped around the web bars. The opening must be equal to or exceeding the following lengths listed by species:

- **Dungeness:** Opening is a minimum of 18 inches long. Or as a substitute, the pot lid tie-down straps may be secured to the pot at one end by a single loop of untreated, 100% cotton twine, no larger than 60-thread. The pot lid must be secured so that when the twine degrades, the lid will no longer be securely closed.
- **King and Tanner:** Opening is a minimum of 18 inches long.
- **Shrimp:** Opening is a minimum of 6 inches long.

Opening at least 18 inches long (6 inches for shrimp pots) and no more than 6 inches from bottom of pot and parallel to it.

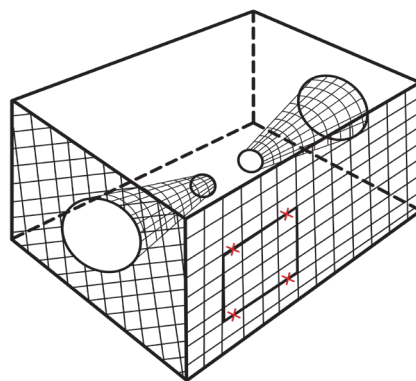


Untreated 100% cotton twine, no larger than 30-thread.

RIGID MESH POTS

Pots must have at least one rectangular opening in a sidewall of the pot which may include a side of the tunnel. The lower long edge of the opening must be parallel to and within 6 inches of the bottom of the pot. The opening may be covered with a single panel secured to the pot with no more than four single loops of untreated, 100% cotton twine, no larger than 30-thread; each single loop of cotton twine may not be laced along the opening. The panel must be attached to the pot in a manner that when the cotton twine degrades, the panel will drop away from the pot exposing the opening completely. The panel must be equal to or exceeding the dimensions listed below.

- **Dungeness:** 10 inches x 6 inches or, as a substitute, the pot lid tie-down straps may be secured to the pot at one end by a single loop of untreated, 100% cotton twine, no larger than 60-thread. The pot lid must be secured so that when the twine degrades, the lid will no longer be securely closed.
- **King and Tanner:** 12 inches x 8 inches.
- **Shrimp:** 4 inches x 4 inches.



CAUTION! PARALYTIC SHELLFISH POISONING HAS OCCURRED ON SOME ALASKAN BEACHES.

For more information, please contact (907) 269-7638 or check the State of Alaska Department of Environmental Conservation's Seafood and Shellfish webpage at <https://health.alaska.gov/dph/epi/id/pages/dod/psp/default.aspx>.

SHELLFISH REGULATIONS

ALASKA RESIDENTS PERSONAL USE SHELLFISH REGULATIONS

CRAB

- **Dungeness Crab:** 20 males, 6½ inches minimum size, **except in the waters of Thorne Bay west of the longitude of the southernmost tip of Thorne Head**, the daily bag and possession limit is 5 male Dungeness crab, 6½ inches minimum size.
- **King Crab:** **Check for an emergency order and/or permits with the nearest ADF&G office.**
- **Tanner Crab:** 30 males, 5½ inches minimum size.

SHRIMP

- **Shrimp:**
 - A permit is required.
 - No bag, possession, or size restrictions, **except in the District 13 Sitka Area** where the bag and possession limit of spot shrimp is 10 gallons (whole or deheaded).

EO In 2026, the personal use shrimp fishery near Juneau, Tenakee Inlet, Crawfish Inlet, Hoonah Sound, Kasaan Bay, and Skowl Arm is closed by emergency order. See the personal use shrimp permit or emergency order for info.

OTHER SHELLFISH

- **Abalone:** 5 abalone, 3½ inches minimum size.
- **Geoducks:** 6 geoducks.
- **Razor Clams:** No bag, possession, or size restrictions, **except Sitka Sound where razor clams may not be retained and the waters of western Kruzof Island beaches between Cape Edgcumbe and Cape Georgiana**, where the bag and possession limit is 50 clams.
- **Scallops:** 5 rock scallops (*Hinnites sp.*) and 10 weather-vane scallops (*Pecten sp.*), **except in the Yakutat Area (between the longitude of Cape Suckling and Cape Fairweather)** where the limit is 50 weathervane scallops. There are no limits for all other scallops.
- **Other Shellfish Species Not Listed Above:** No bag, possession, or size restrictions.

NUMBER OF POTS & RINGS ALLOWED FOR RESIDENTS

DUNGENESS, KING, AND TANNER CRAB

- **In the Juneau area, shellfish gear limits are established by emergency order. Please check with your local ADF&G office for information.**
- While taking Dungeness crab, 5 pots OR 10 ring nets per person may be used, with a maximum of 10 pots OR 20 ring nets per vessel.
- While taking Tanner or king crab, no more than 4 pots OR 10 ring nets per vessel may be used (except 20 ring nets per vessel may be used in the Yakutat area).
- In total, no more than 5 pots per person and 10 pots per vessel may be used for taking crab regardless of pot type.

SHRIMP

- In addition to crab pots, 10 shrimp pots per person with a maximum of 20 pots per vessel may be used. Shrimp pots may be longlined.

NONRESIDENTS SPORT SHELLFISH REGULATIONS

CRAB

- **King Crab:** **Closed year-round to sport fishing.**
- **Tanner and Dungeness Crab:**
 - In combination: 3 males.
 - **Tanner Crab:** 5½ inches minimum size.
 - **Dungeness Crab:** 6½ inches minimum size.
 - **Areas closed to the taking of Dungeness crab:**
 - **Yakutat area (Cape Suckling to Cape Fairweather).** See page 15.
 - **Prince of Wales: Klawock/Shinaku Inlets, Coffman Cove, Thorne Bay, and Whale Pass.** See page 35.

SHRIMP

- **Shrimp:**
 - A permit is required. 3 pounds or quarts (whole or deheaded), no size restrictions.
 - **Areas closed to the taking of shrimp:**
 - **Ketchikan: Clover Pass Area.** See page 39.
 - **Prince of Wales: Twelve-Mile Arm.** See page 35.
 - **Sitka Sound Special Use Area:** See page 28.
- EO** In 2026, the sport shrimp fishery near Juneau, Tenakee Inlet, Crawfish Inlet, Hoonah Sound, Kasaan Bay, and Skowl Arm is closed by emergency order. See the shrimp permit or emergency order for info.

OTHER SHELLFISH

- **Abalone:** **Closed year-round.**
- **Geoducks:** **Closed year-round.**
- **Razor Clams:** 10 razor clams, **except Sitka Sound where razor clams may not be retained.**
- **Scallops:** 5 rock scallops (*Hinnites sp.*) and 10 weathervane scallops (*Pecten sp.*). There are no limits for all other scallops.
- **Other Shellfish Species Not Listed Above:** No bag, possession, or size restrictions.

NUMBER OF POTS & RINGS ALLOWED FOR NONRESIDENTS

DUNGENESS AND TANNER CRAB

- While taking Dungeness crab, 4 crab pots OR 10 ring nets per person may be used, with a maximum of 10 crab pots OR 20 ring nets per vessel.
- While taking Tanner crab, no more than 4 crab pots OR 10 ring nets per vessel may be used.
- In total, no more than 4 pots per person and 10 pots per vessel may be used for taking shellfish regardless of pot type.

SHRIMP

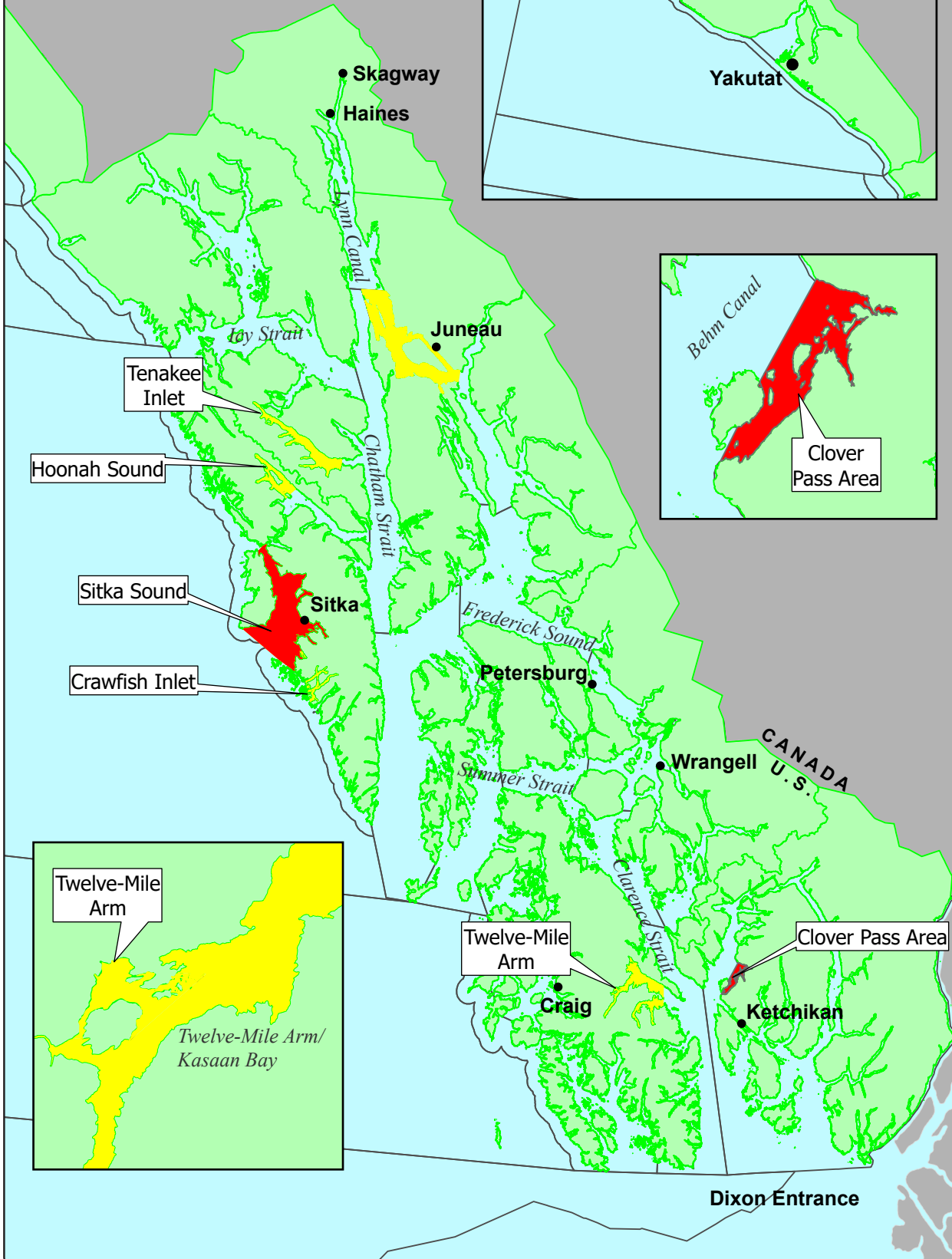
- In addition to crab pots, 5 shrimp pots per person with a maximum of 10 pots per vessel may be used. Shrimp pots may **NOT** be longlined.

Reporting on your shellfish permit **IS REQUIRED** even if you did not go shrimping or crabbing, and even if you did not catch anything.


You can report online at <https://harvest.adfg.alaska.gov>, using the QR code on the permit, or you can mail your permit to: ADF&G, P.O. Box 110024, Juneau, AK 99811.

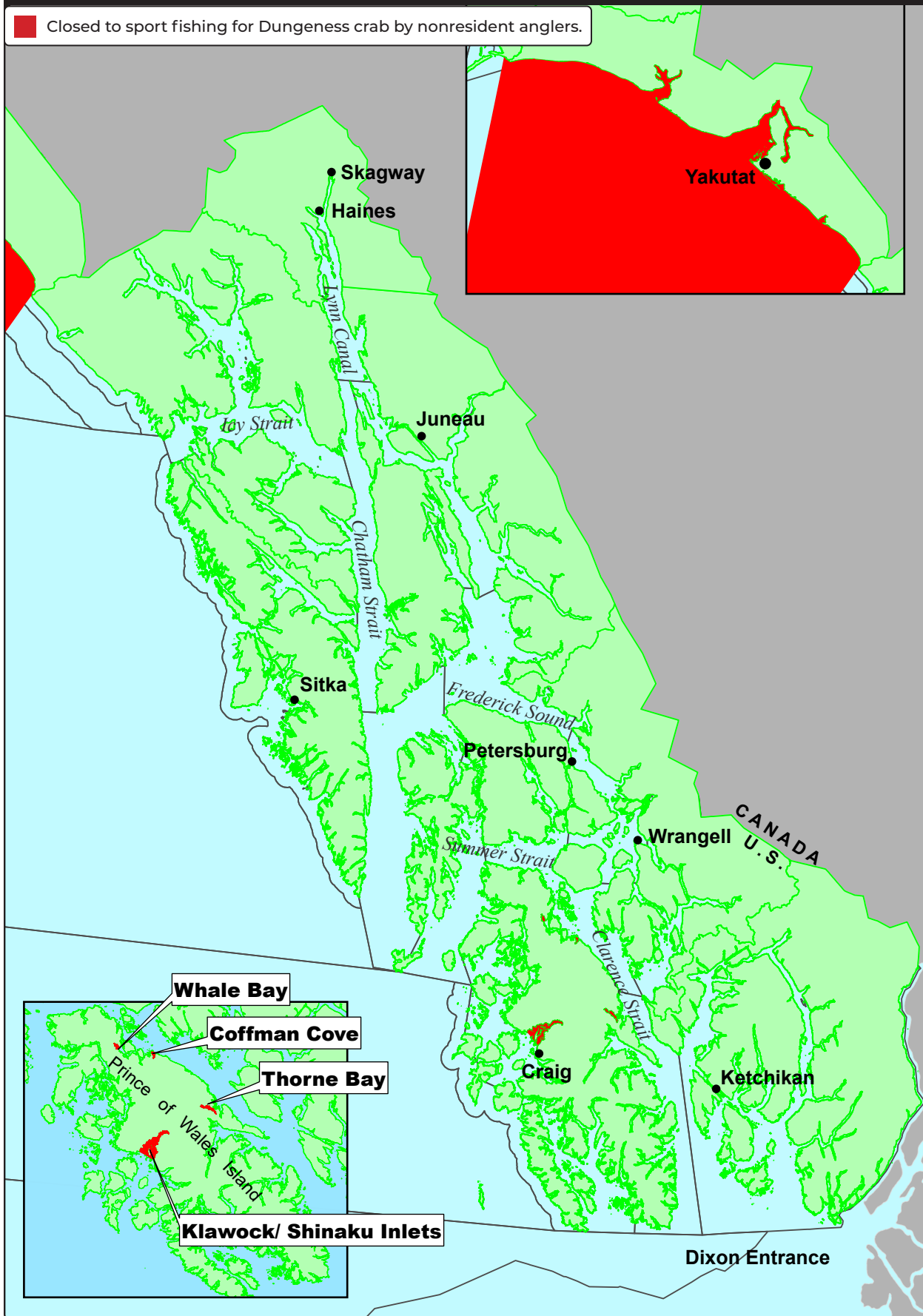
SOUTHEAST SHRIMP CLOSURES

- Closed to sport fishing for shrimp by nonresident anglers.
- Closed to sport fishing for shrimp by nonresidents and personal use shrimping by residents in 2026 by EO.



SOUTHEAST DUNGENESS CRAB CLOSURES

 Closed to sport fishing for Dungeness crab by nonresident anglers.



SHELLFISH REGULATIONS

SHELLFISH REGULATIONS

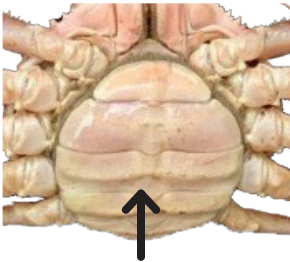
CRAB ID AND MEASUREMENTS

TANNER CRAB

Minimum size 5½ inches

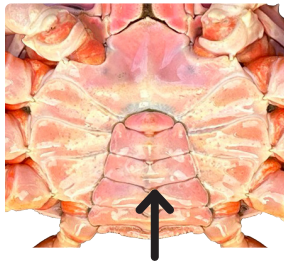
FEMALE

NO HARVEST ALLOWED

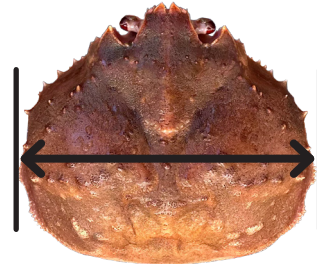


A wide uneven abdominal flap covers most of the underside, with females typically smaller than 5½ inches

MALE



A narrow triangular abdominal flap covers the underside



+5.5 inches

The width of a Tanner crab is measured as the straight-line distance across the carapace, **including** the spines

DUNGENESS CRAB

Minimum size 6½ inches

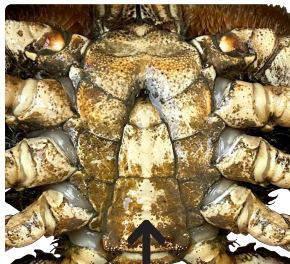
FEMALE

NO HARVEST ALLOWED



A wide uneven abdominal flap covers most of the underside

MALE



A narrow triangular abdominal flap covers the underside



+6.5 inches

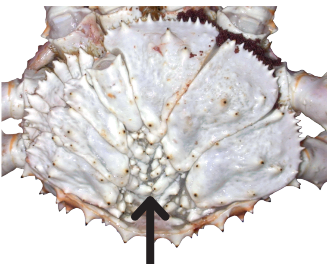
The width of a Dungeness crab is measured as the straight-line distance across the carapace, **excluding** the spines

KING CRAB

Minimum size 7 inches

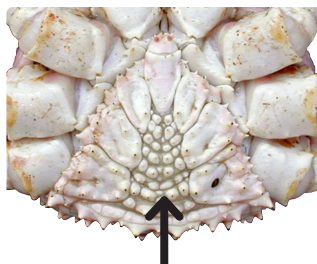
FEMALE

NO HARVEST ALLOWED



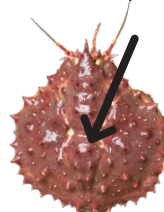
A wide uneven abdominal flap covers most of the underside

MALE



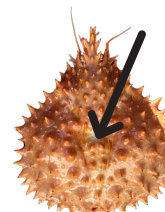
A narrow triangular abdominal flap covers the underside

6 prominent spines on mid-dorsal plate



RED KING CRAB

5 to 9 spines on mid-dorsal plate



GOLDEN KING CRAB

4 prominent spines on mid-dorsal plate



BLUE KING CRAB