



**Legend**

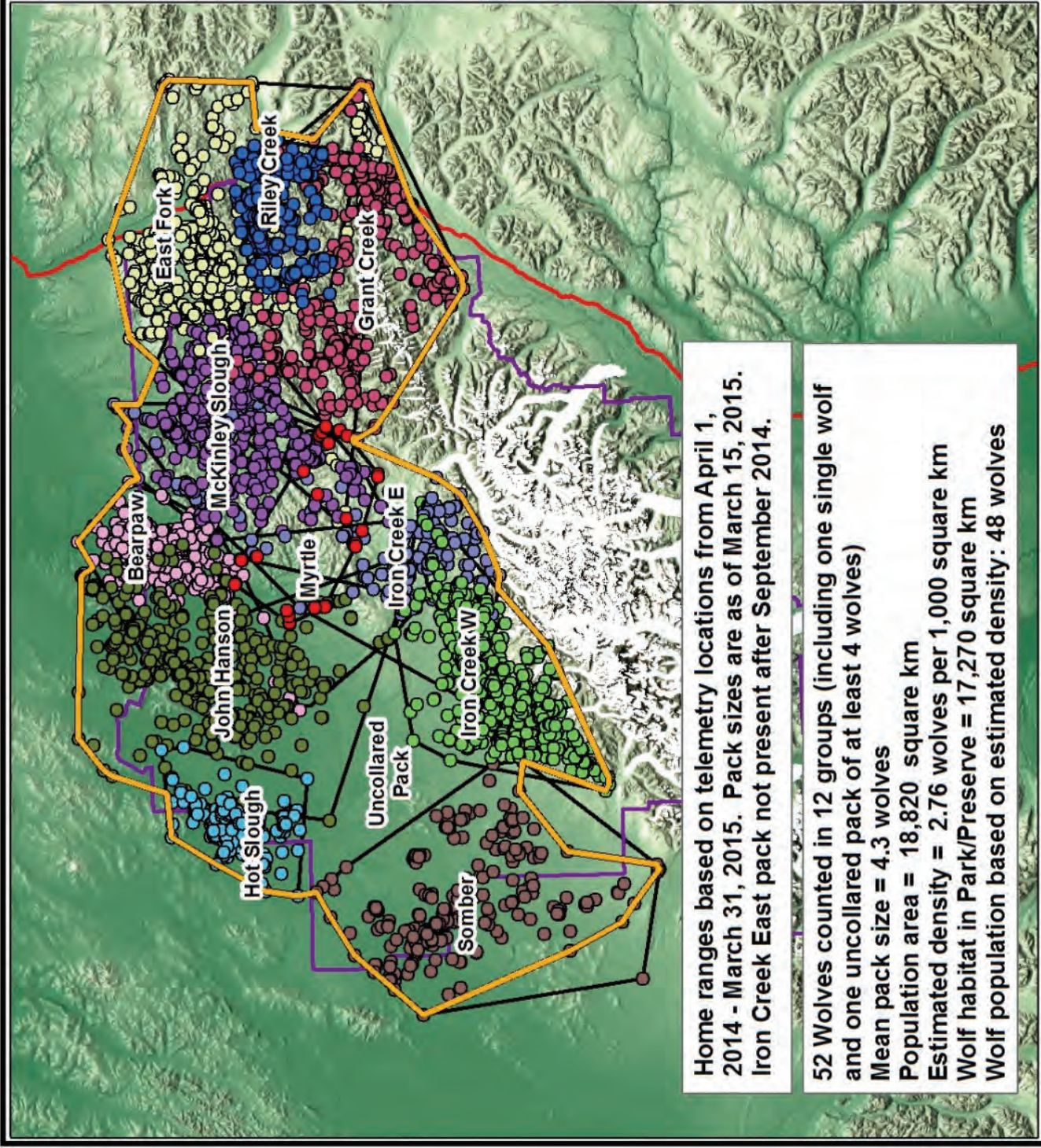
**Wolf Locations (Pack size)**

- Bearpaw (2)
- East Fork (14)
- Grant Creek (4)
- Hot Slough (2)
- Iron Creek East (0)
- Iron Creek West (7)
- John Hansen (5)
- McKinley Slough (2)
- Myrtle (2)
- Riley Creek (5)
- Somber (4)

- Pack Territories
- Population Area
- Park Boundary
- George Parks Highway

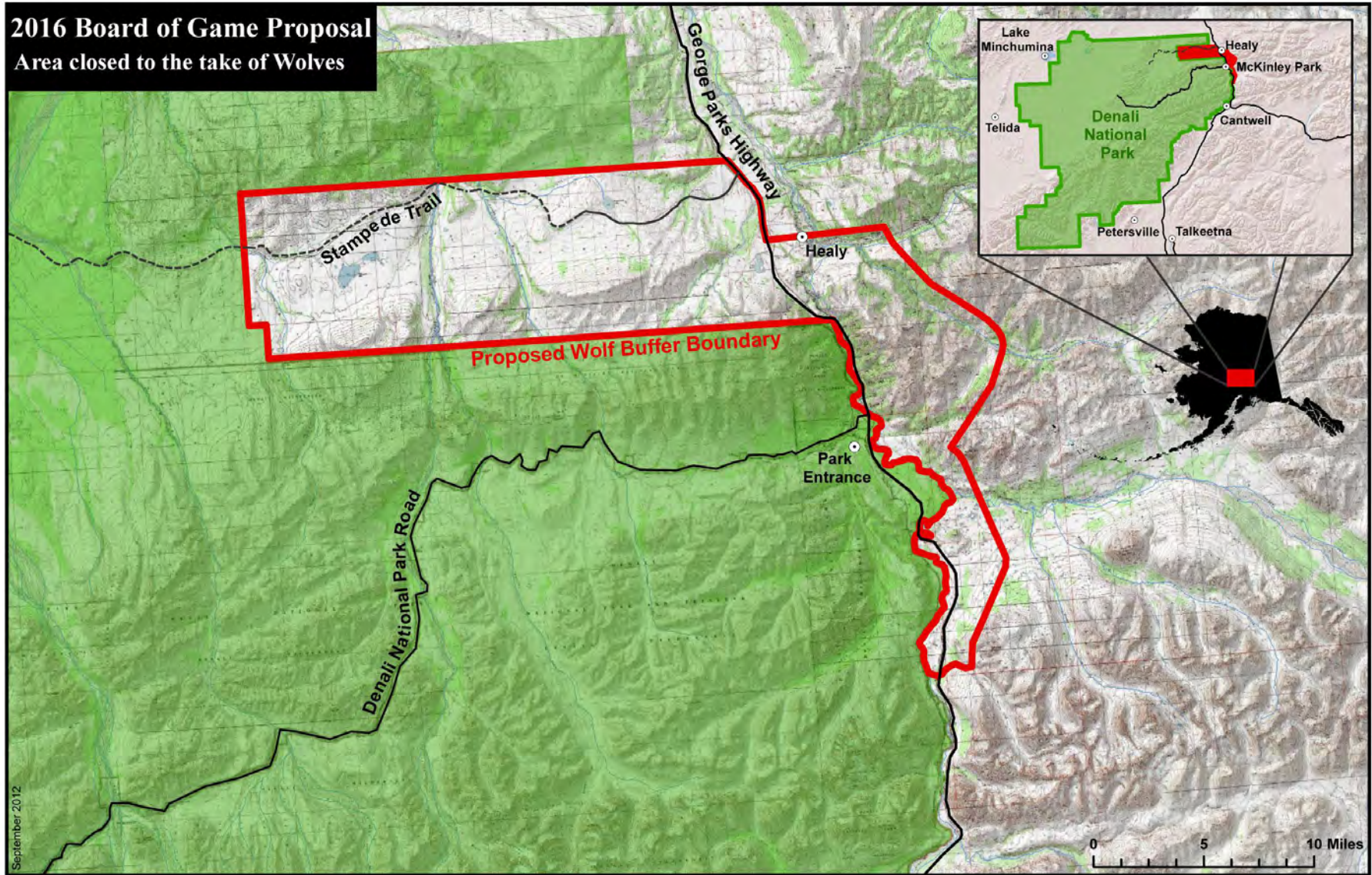
0 20 40 Kilometers  
0 10 20 30 Miles

March 31, 2015



Home ranges based on telemetry locations from April 1, 2014 - March 31, 2015. Pack sizes are as of March 15, 2015. Iron Creek East pack not present after September 2014.

52 Wolves counted in 12 groups (including one single wolf and one uncollared pack of at least 4 wolves)  
 Mean pack size = 4.3 wolves  
 Population area = 18,820 square km  
 Estimated density = 2.76 wolves per 1,000 square km  
 Wolf habitat in Park/Preserve = 17,270 square km  
 Wolf population based on estimated density: 48 wolves



## Map of proposed closed area

The red line encloses a proposed buffer or area closed to the take of wolves on state lands in the Wolf Townships and along the Nenana River in Units 20C and 20A.

## Wolf Survey Data, Spring (approx. 15 March) and Fall (approx. 1 October), Denali National Park and Preserve, 1986-2014

YEAR	NUMBER OF PACKS MONITORED		TOTAL WOLVES COUNTED		MEAN PACK SIZE		COMBINED AREA OF MONITORED PACKS		ESTIMATED DENSITY: WOLVES/1000KM2		POPULATION ESTIMATE INSIDE THE PARK*	
	SPRING	FALL	SPRING	FALL	SPRING	FALL	SPRING	FALL	SPRING	FALL	SPRING	FALL
1986	4	4	26	22	6.5	5.5	7,380	8,180	3.52	2.69	61	46
1987	8	9	37	70	4.6	7.8	12,125	13,150	3.05	5.32	53	92
1988	14	14	69	121	4.9	8.6	15,355	14,670	4.49	8.25	78	142
1989	13	11	98	127	7.5	11.5	16,810	15,240	5.83	8.33	101	144
1990	10	11	106	136	10.6	12.4	13,930	13,930	7.61	9.76	131	169
1991	13	13	111	137	8.5	10.5	14,275	14,275	7.78	9.6	134	166
1992	15	15	103	120	6.9	8	13,620	13,620	7.56	8.81	131	152
1993	12	12	68	93	5.7	7.8	9,900	9,900	6.87	9.39	119	162
1994	10	12	61	72	6.1	6	11,145	11,145	5.47	6.46	95	112
1995	12	11	59	80	4.9	7.3	12,120	12,045	4.87	6.64	84	115
1996	11	11	69	104	6.3	9.5	12,640	12,776	5.46	8.14	94	141
1997	11	12	78	75	7.1	6.3	13,080	12,808	5.96	5.86	103	101
1998	12	12	61	68	5.1	5.7	13,121	12,578	4.65	5.41	80	93
1999	13	15	69	80	5.3	5.3	12,699	12,699	5.43	6.3	94	109
2000	17	18	71	112	4.2	6.2	14,378	14,554	4.94	7.7	85	133
2001	16	18	87	91	5.4	5.1	13,802	13,802	6.3	6.59	109	114
2002	15	14	73	86	4.9	6.1	13,026	12,226	5.6	7.03	97	121
2003	18	11	75	84	4.2	7.6	11,682	11,682	6.42	7.19	111	124
2004	14	14	78	78	5.6	5.6	16,061	14,630	4.86	5.33	84	92
2005	15	15	66	106	4.4	7.1	14,630	15,367	4.51	6.9	78	119
2006	15	17	103	111	6.9	6.5	15,367	17,439	6.7	6.37	116	110
2007	16	20	93	147	5.8	7.4	17,439	17,757	5.33	8.28	92	143
2008	20	14	99	86	5	6.1	17,757	16,607	5.58	5.18	96	89
2009	16	15	65	89	4.1	5.9	16,607	17,061	3.91	5.22	68	90
2010	12	11	59	88	4.9	8	17,061	17,994	3.46	4.89	60	84
2011	10	8	71	75	7.1	9.4	17,994	17,994	3.95	4.17	68	72
2012	10	9	70	57	7	6.3	18,340	18,340	3.82	3.11	66	54
2013	11	12	49	67	4.5	5.6	15,473	15,473	3.19	4.33	55	75
2014	10	11	51	55	5.1	5.1	17,640	17,640	2.89	3.12	50	54
2015†	12	11	52	62	4.3	5.6	18,820	18,820	2.76	3.29	48	57

\*Population estimate inside the park =calculated wolf density estimate across an estimated 17,270 square km of potential habitat within park boundaries, north of the Alaska Range

†Preliminary data